



C-SCOPE in Dorset

Ken Buchan, Dorset County Council &
Dorset Coast Forum



C-SCOPE has three key activities

1. Developing a framework for integrating terrestrial and marine planning
2. Development of tools for achieving sustainable coastal economies and environments
3. Achieving commitment to ICZM through stakeholder engagement



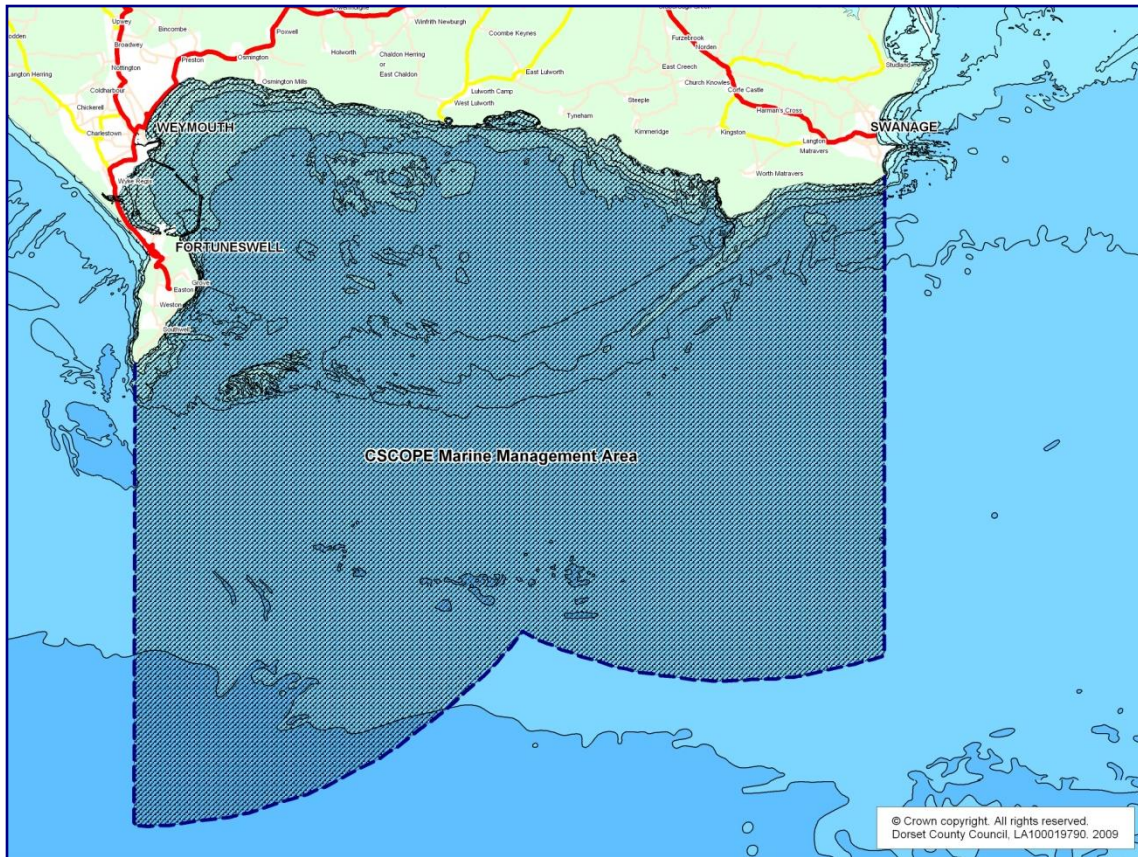
Developing a framework for integrating terrestrial and marine planning

- Establishment of the Dorset Marine Management Area (MMA)
- A seabed map of the MMA
- Land and seascape assessment
- Offshore renewable capacity
- Collation of spatial and temporal maritime sector data

Leading to:

- Establishment of an effective pilot Marine Plan
- A world class Marine Management Area that is an exemplar for Integrated Coastal Zone Management



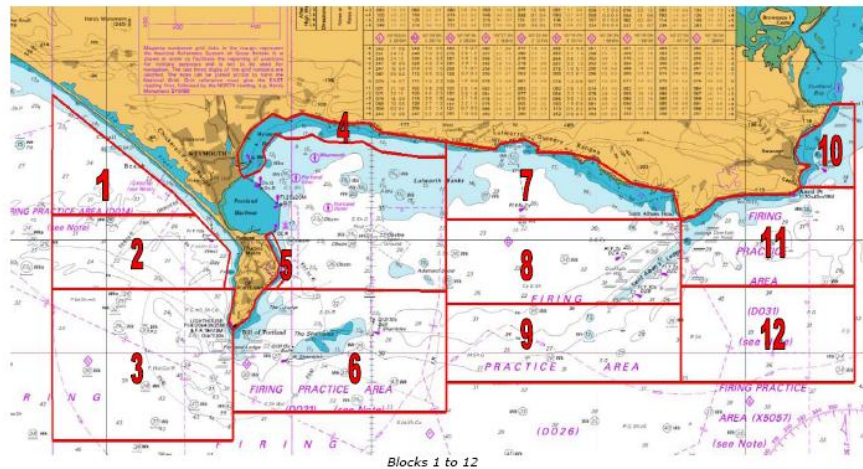


The Dorset MMA has been chosen because:

- 🌐 It includes the coastal waters in which the 2012 events will be held as a focal point
- 🌐 It is large enough to include a variety of types of coastline with a full range of activities, uses and potential conflicts
- 🌐 It is small enough to make for a manageable pilot project



A seabed map of the MMA



Navigation Safety Branch
Maritime & Coastguard Agency
© Crown Copyright

03/04/2008

🌀 Partnership project DWT, MCA and Channel Coast Observatory

🌀 Multi beam surveys, ground truthing, data interpretation and habitat mapping



Land and seascape assessment

A landscape/seascape capacity study will determine the visual capacity of Dorset's coastal environment to accommodate offshore renewables and other coastal infrastructure such as marinas and aquaculture developments without negatively affecting landscape/seascape quality and experience.

The work follows the basic principles of landscape character assessment and is split into two key phases:

1. Characterisation
2. Evaluation



Offshore renewable capacity

- 🌀 Compile information on marine renewable energy technologies and potential operating conditions
- 🌀 Source best available regional datasets extracted from the updated Atlas of UK Marine Renewable Energy Resources
- 🌀 Apply the combined data criteria (e.g. depth, distance from land and specific resource parameters) to each resource GIS layer to identify potentially suitable resource locations
- 🌀 Take new layers with suitable resource locations and overlay onto constraints data layers
- 🌀 Produce data layers indicating appropriate and inappropriate areas for offshore renewable energy developments



Collation of spatial and temporal maritime sector data

Aquaculture

Coastal walks

Scuba diving sites

Popular Angling areas

Popular Boating areas

Popular Sailing areas

Moorings and Anchorages

Coastal roads, viewpoints and picnic areas

Areas of scenic value

Wildlife conservation and existing designations

Special wildlife interests e.g. bird breeding sites

Biodiversity and LBAP species

Archaeological and Historical Sites

Scientific studies and research sites

Commercial marine traffic

Navigation hazards

Coastal industry

Commercial fishing activity

Commercial effluent

Sewage effluent

Coastal construction e.g. marinas, piers, jetties, slipways

Coastal defences

Potential areas of flooding

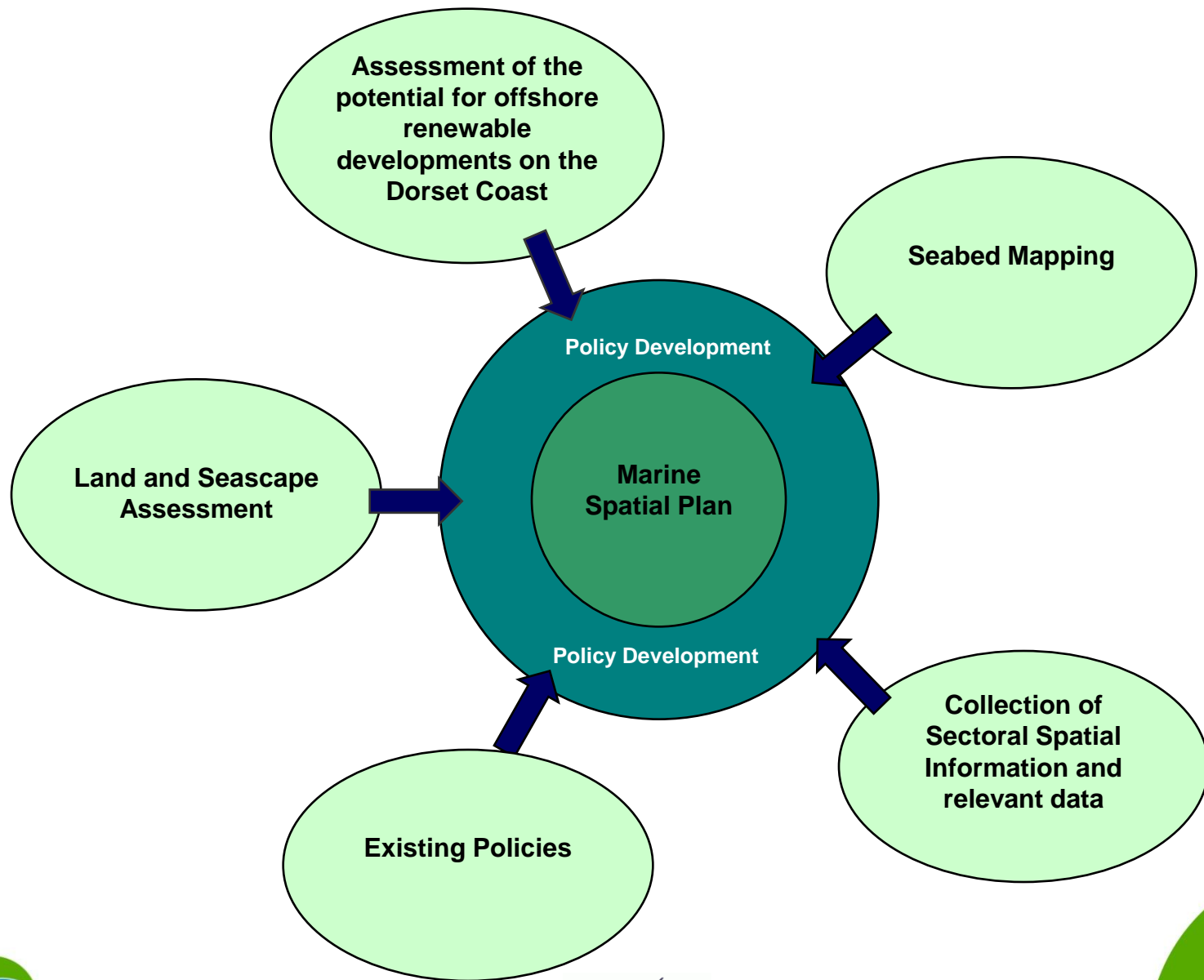
Agriculture

Land Ownership

Aggregate extraction

Maintenance dredging areas





Outputs:

- 🌀 A detailed seabed map for the DORSET Marine Management Area
- 🌀 A Dorset landscape/ seascape capacity report
- 🌀 A Dorset offshore renewable capacity report.
- 🌀 A descriptive report on the Dorset Marine Management Area.
- 🌀 A working coastal and marine plan for the Dorset Coast MMA.
- 🌀 A world class Marine Management Area that is an exemplar for Integrated Coastal Zone Management



Benefits of transnational working

- 🌀 Compare approach and methodology for MMA and Belgian and UK experience with Marine Spatial Planning
- 🌀 A detailed sea bed map for the Belgian Continental Shelf is available and the project will enable contact between Belgian and Dorset experts
- 🌀 In relation to offshore renewable energy comparisons can be drawn with the Belgian experience where areas have been designated for wind energy production at sea through stakeholder consultation

This will enable the.....

- 🌀 Preparation of a non-technical guide to Integrated land/sea planning and management.
- 🌀 Production of a report detailing the best methodology for effective Stakeholder Engagement.



Development of tools for achieving sustainable coastal economies and environments

🌀 Coastal Explorer Planning will be a unique and innovative tool that will provide information on prevailing policies, ecology, current uses and land/seascape features for planning professionals



Benefits of transnational working

Combined expertise in IT, design and knowledge of existing Explorer software and the use and development of coastal sustainability indicators will allow us to develop tools which could have broad application in future marine planning in Europe

This will enable us to:

Produce a comprehensive Coastal Explorer web-based planning tool and incorporate Explorer technology into the Belgian Coastal Atlas

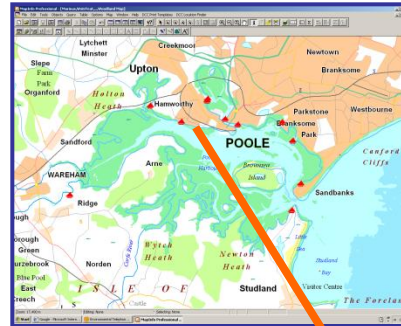
Develop new sustainability indicators for Europe.

Construct a full inventory of all EU, national, regional and local plan policies relevant to the two MMAs.



Achieving commitment to ICZM through stakeholder engagement

Establishment of Coastal Explorer Interactive and provision of a series of hi-tech interactive coastal information points, or Coastal Explorer Access Points



Marina name	
Contact	Rockley Boat Park E: boatpark@bourne-leisure.co.uk T: 01202 665001
Facilities	
No. of marina berths	32
Maximum length	27ft
No. of swinging moorings	50
Maximum draught	5ft
Jet Ski compound	Y
Slipway	X2
VHF	N
24 hour access to water	Y
24 hour security	Y
Petrol	N
24hrs	N
Diesel	N
24hrs	N
Electricity nearby	Y
Electricity on pontoon	Y
Fresh water nearby	Y
Fresh water on pontoon	N
Pump out/Waste disposal	N
Shore storage	Y
Travel hoist	N
Gantry hoist	N
Chandlery	N
Boat or engine repairs	Y
Sailmaker	N
Tide and weather information	Y
Car parking	Y
Toilets	Y
Disabled access for toilets	N
Hot showers	Y
Laundry facilities	N
Public payphone	N
Bar/Restaurant	Y
Shop/basic provisions nearby	Y
RYA tuition	N



Benefits of transnational working

- 🌀 Draw on experience from Belgium and possible existing Codes of conduct for sustainable use of the coast.

Combined experience and expertise will enable us to:

- 🌀 Collate of all relevant data, information, codes of practice and set up agreements.

- 🌀 Development of the Coastal Explorer Interactive website.

- 🌀 Establishment of the interactive Coastal Explorer Access Points.





With special thanks to our funding partners
and all our coastal stakeholders



Investing in your future
Cross-border Cooperation Programme
2007-2013
Part-financed by the European Union
(European Regional Development Fund)

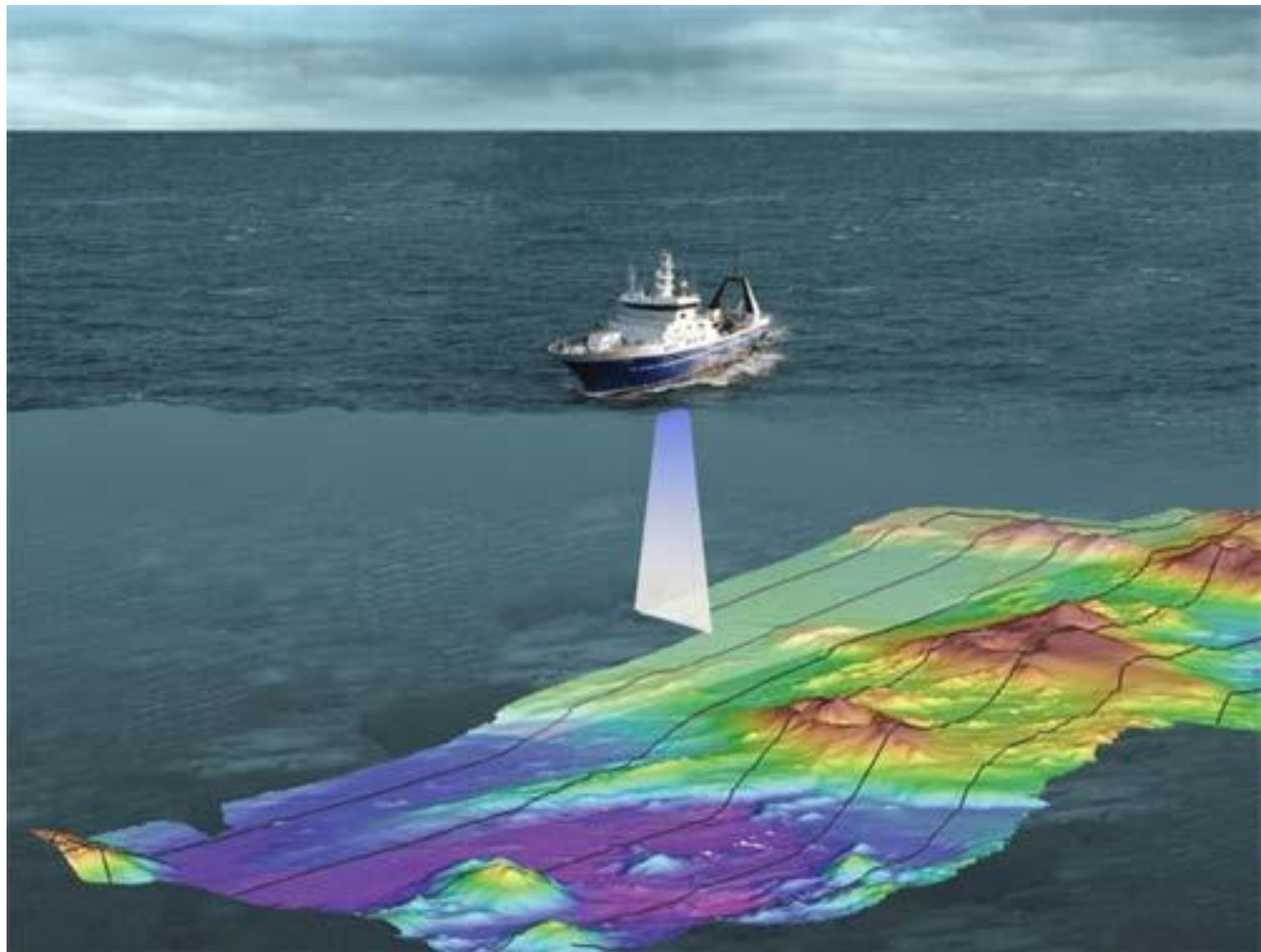


federale overheidsdienst
**VOLKSGEZONDHEID,
VEILIGHEID VAN DE VOEDSELKETEN
EN LEEFMILIEU**
service public fédéral
**SANTÉ PUBLIQUE,
SECURITE DE LA CHAÎNE ALIMENTAIRE**

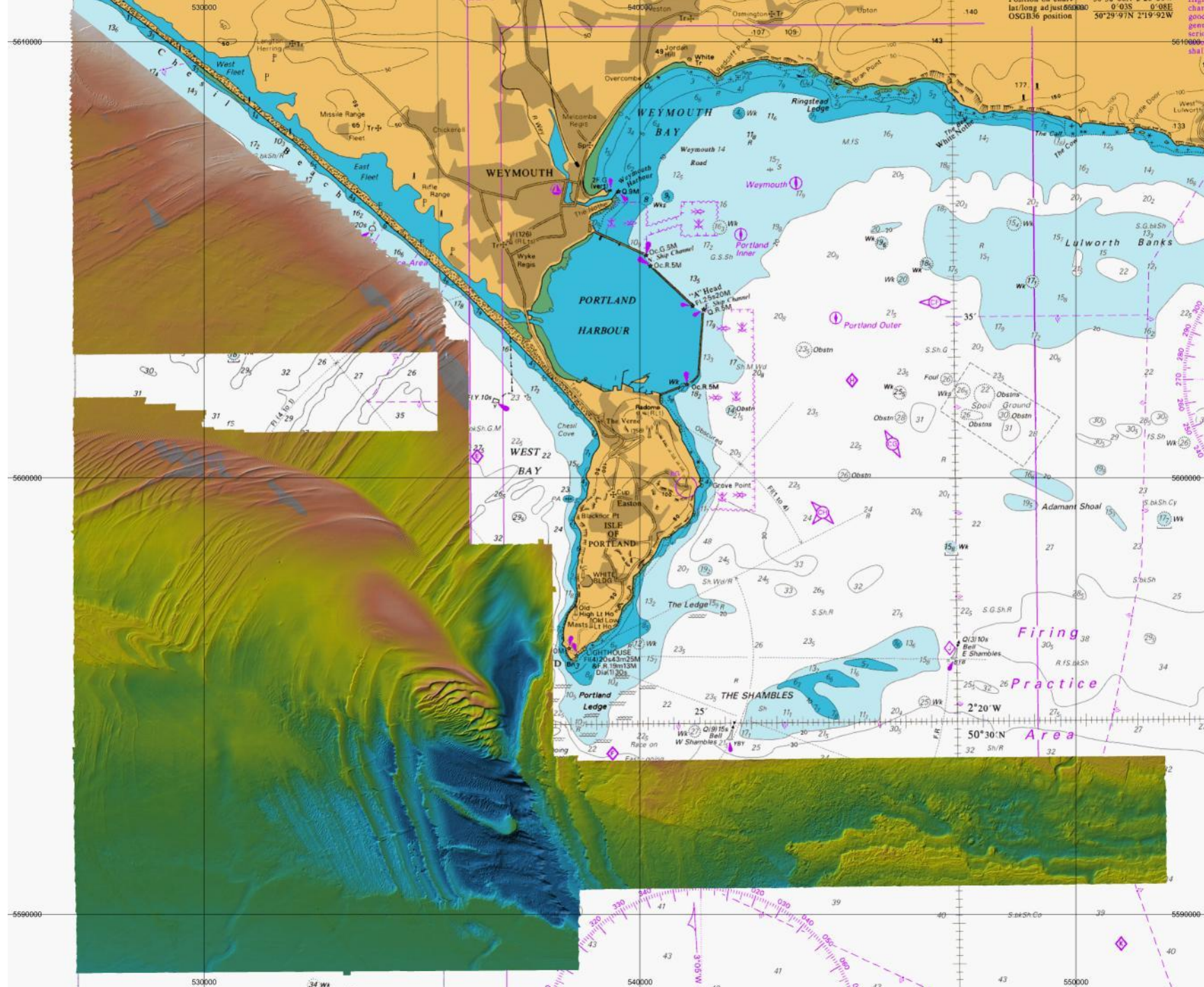


DorIS

Dorset Integrated Seabed
survey







must be
WARD
before
OSGB36

00°00'W
0°08'E
19°92'W

5610000

anks

5600000

Sh

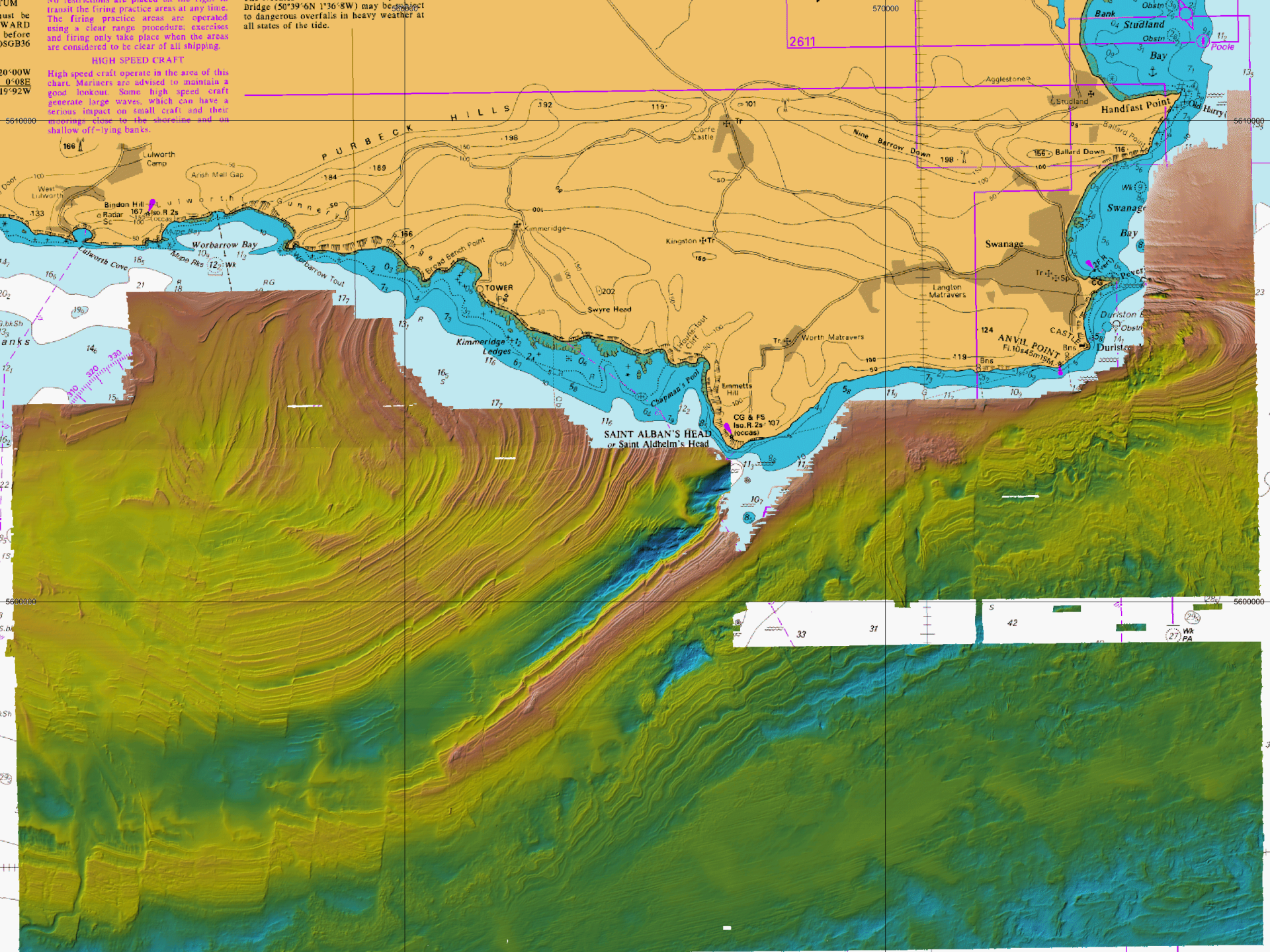
29

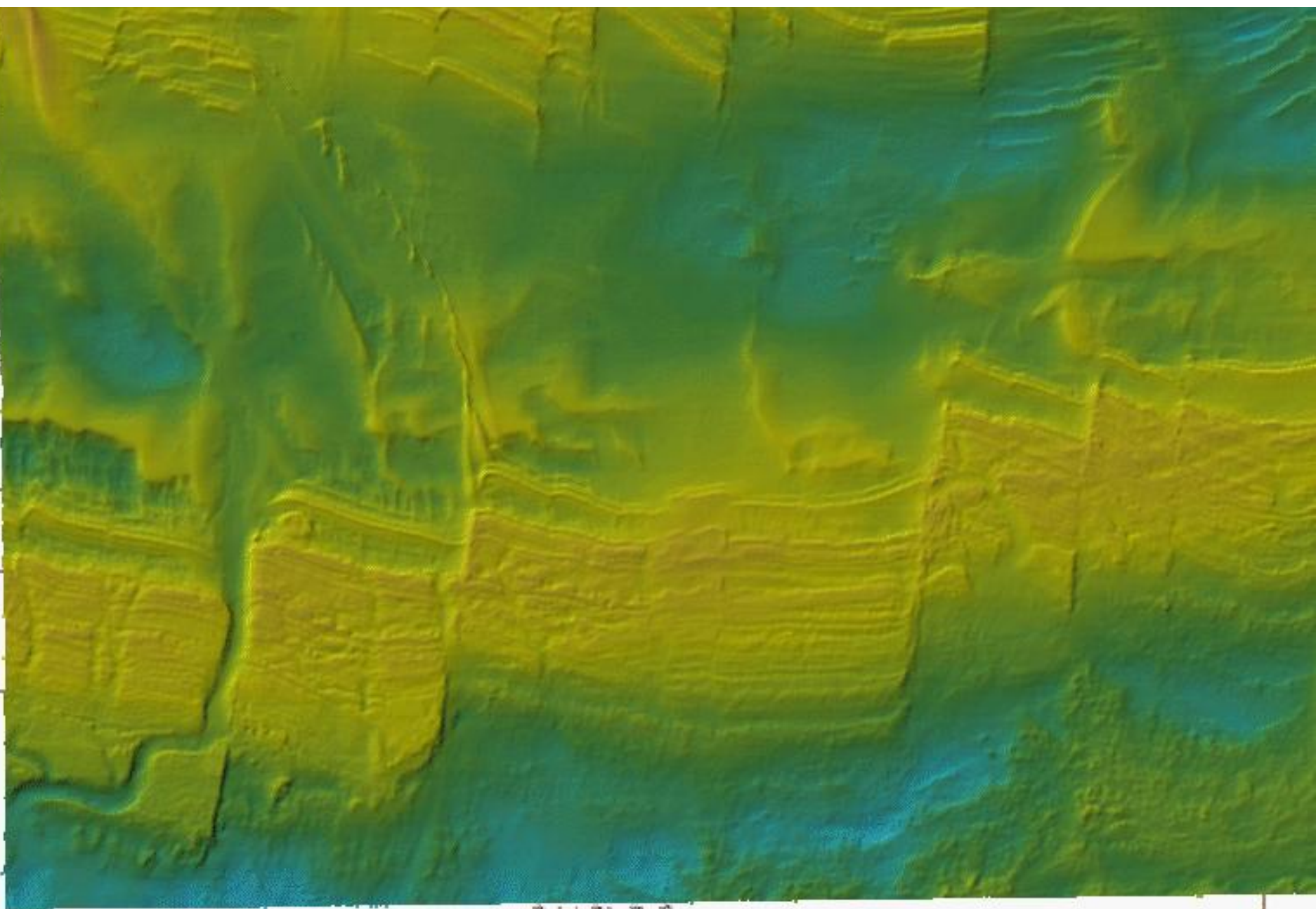
transit the firing practice areas at any time.
The firing practice areas are operated
using a clear range procedure; exercises
and firing only take place when the areas
are considered to be clear of all shipping.

HIGH SPEED CRAFT

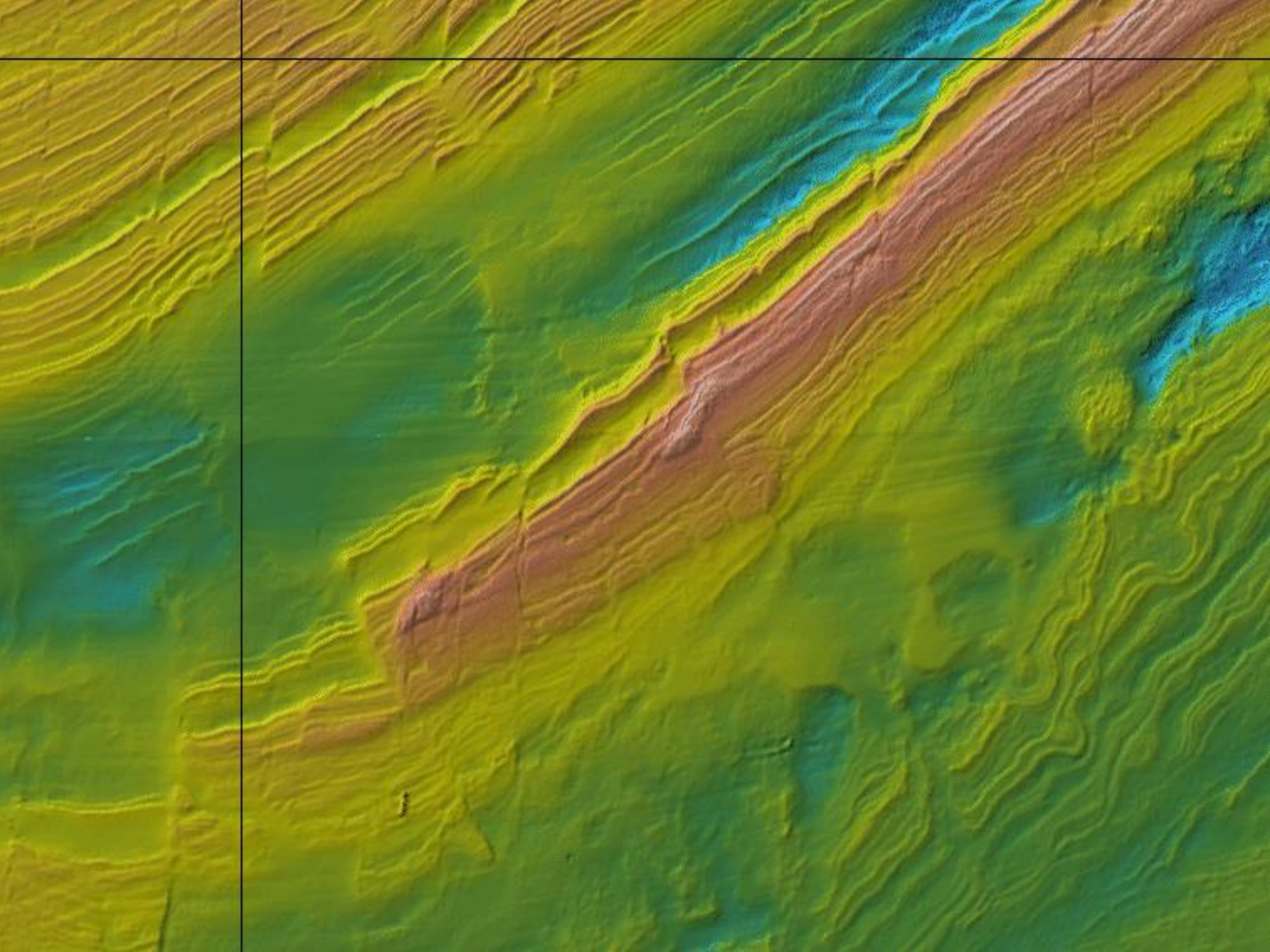
High speed craft operate in the area of this
chart. Mariners are advised to maintain a
good lookout. Some high speed craft
generate large waves, which can have a
serious impact on small craft and their
moorings close to the shoreline and on
shallow off-lying banks.

Bridge (50°39'6N 1°36'8W) may be subject
to dangerous overfalls in heavy weather at
all states of the tide.





S.bkSh.P.G





MARINER

SURVEY

IM
8

S F O





