



DorsetExplorer

An overview by Andy Elliott
Senior GIS Developer
Dorset County Council
a.c.elliott@dorsetcc.gov.uk



Dorset Explorer - CSCOPE - Microsoft Internet Explorer provided by Dorset County Council

File Edit View Favorites Tools Help


Back Forward Stop Home Search Favorites

Address <http://195.49.180.76/dorsetexplorer/?version=cscope> Go Links

Dorset Explorer 2.3.8 CSCOPE

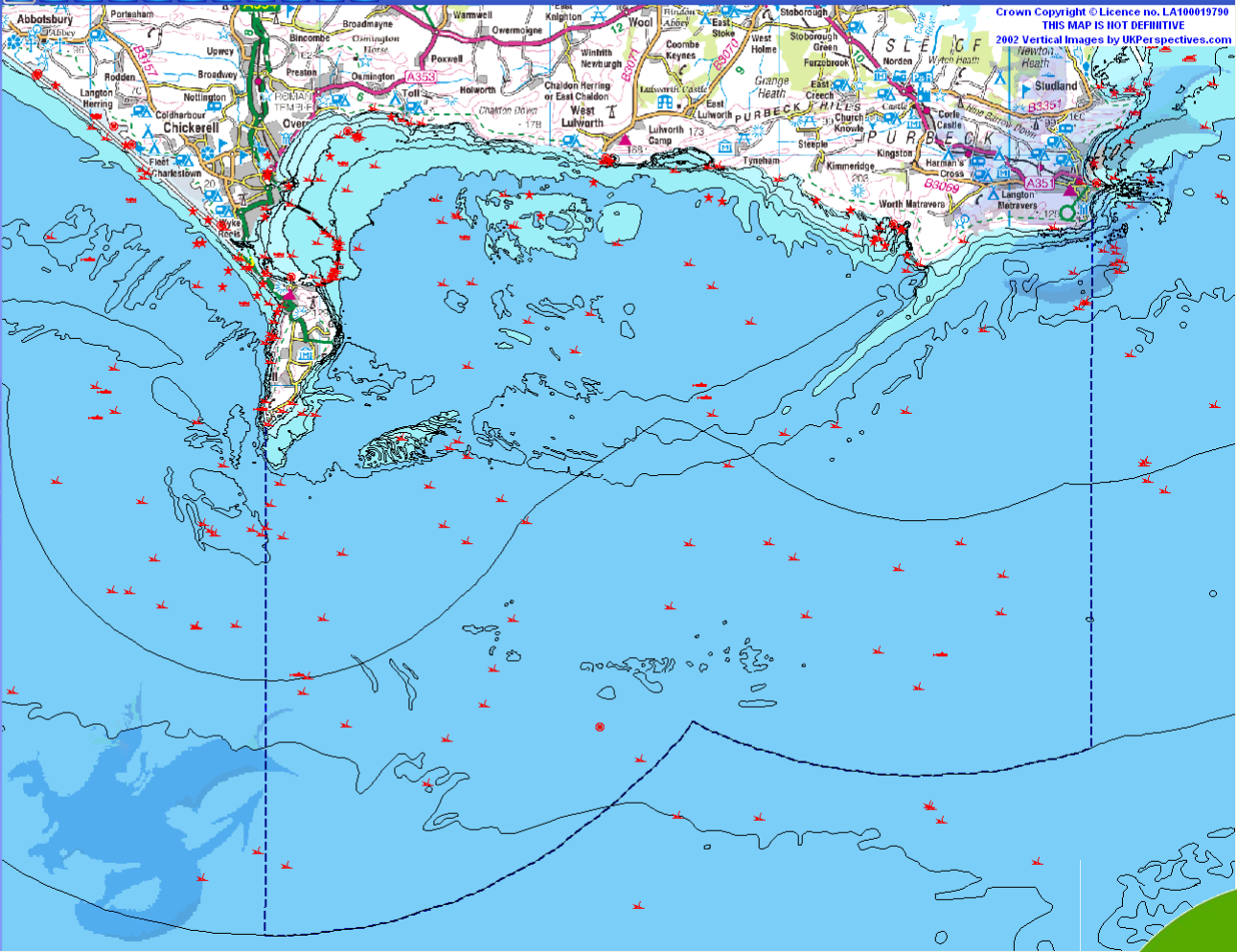
Easting 376061 Northing 05993 Zoom 53695

> Introduction



c~scope
Combining Sea and Coastal
Planning in Europe

- > Address Search
- > Print
- > Coordinate Translator
- > Find My Nearest
- > Layers
- > Info
- > Permalink
- > Feedback



Crown Copyright © Licence no. LA100019790
THIS MAP IS NOT DEFINITIVE
2002 Vertical Images by UK Perspectives.com

Map Loaded

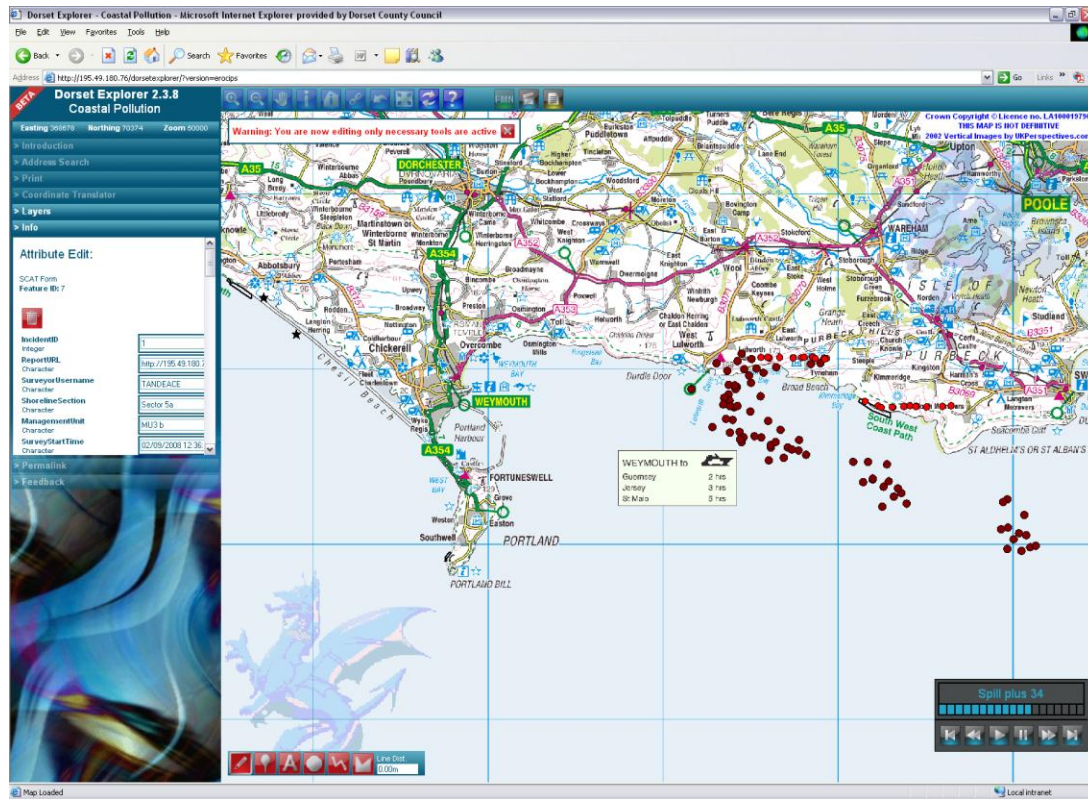


What is DorsetExplorer

- 🌀 A Web deployed GIS (44 versions)
- 🌀 Built on Windows Server 2003
- 🌀 Using MapInfo MapXtreme
- 🌀 With Oracle spatial 10g database
- 🌀 Written in: ASP VBScript, JavaScript and AJAX
- 🌀 Developed 'in house' by the Dorset County Council GIS team.



There are many versions of Dorset Explorer including one to manage Coastal Pollution

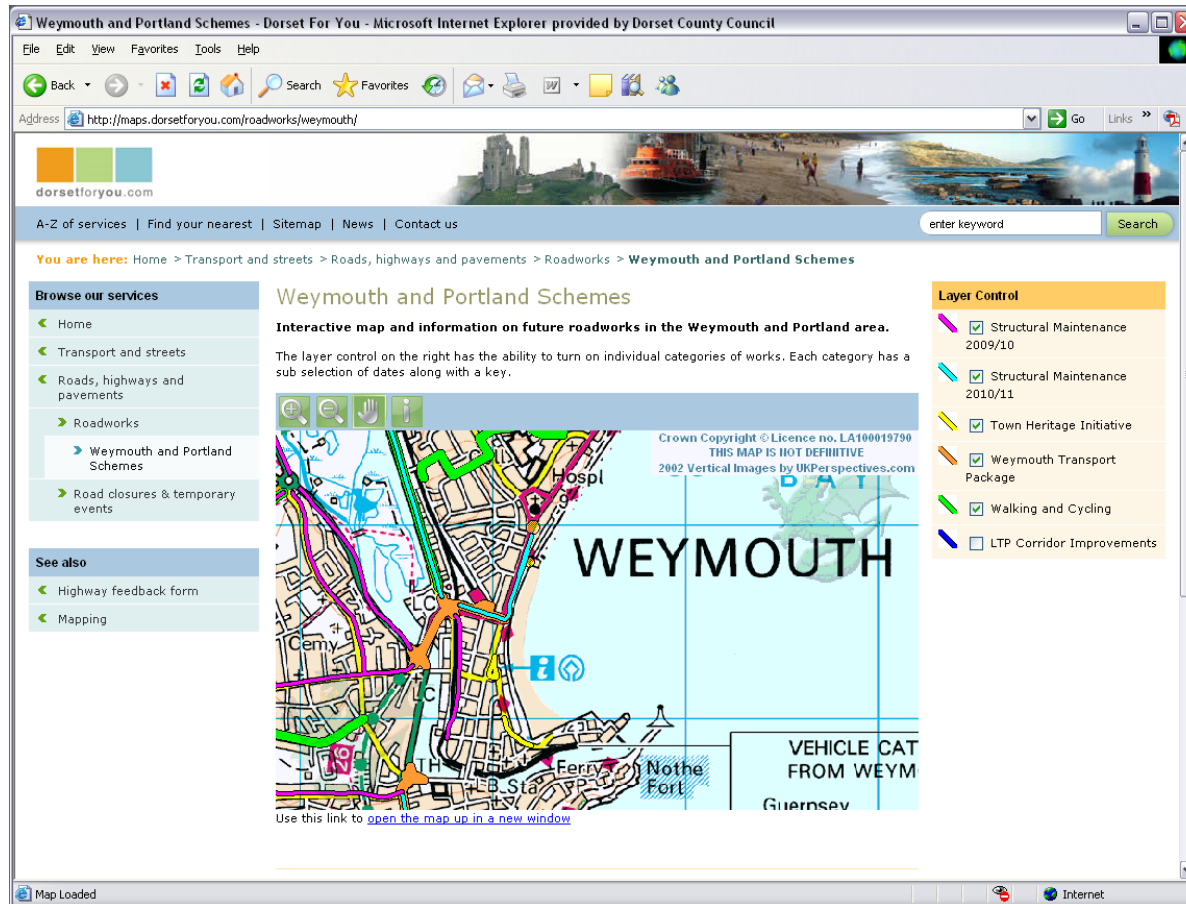


DE can generate reports.

- Multiple data sets can be interrogated to produce reports.
- Reports can be created as PDF, Excel or other document formats.
- Examples are Local Plans and Strategic Environmental Assessments.



A simple interface is available for the public



Future Development

- Version 3.0 will use the .NET Framework
- FME technology will enable data manipulation; ESRI.shp, CAD.dwg etc.
- Will soon incorporate routing technology
- Windows Server 2008
- MapXtreme 2008 (v 6.8)
- Secure data backup





With special thanks to our funding partners
and all our coastal stakeholders

